

CITIZEN

High speed, high resolution, heavy duty printing

CL-S700 with 300dpi



Space-saving design concept

The Hi-Open™ case lifts up vertically meaning that the printer's footprint does not change as the cover is opened making it ideal for tight spaces.

Easy configuration

The large graphic LCD gives a clear indication of printer status and easy printer configuration.

300 dpi Resolution

The CL-S703 is ideal for small labels with 2D matrix barcodes such as Datamatrix, DataBar, QR-Code and PDF417 or printing company logos and idents and CE or WEEE logos.

CL-S703

Other

Applications

- Courier
- Logistic / Transport
- Manufacturing
- Retail
- Warehousing



High performance with easy access

TOMORROW'S PRINTING TODAY

CITIZEN

Specifications

| Model | CL-S703 |
|------------------------------|--|
| Printing Technology | Thermal Transfer + Direct Thermal |
| Resolution | 300 dpi |
| Print Speed (maximum) | 8 inches per second (200 mm/s) |
| Print Width (maximum) | 4 inches (104 mm) |
| Media Width (min to max) | 1 - 4.6 inches (25.4 - 118 mm) |
| Roll Size (max), Core Size | Outside diameter 8 inches (200 mm) Core size 1 inch (25mm) Plus Outside media slot |
| Media Thickness (min to max) | 63.5 to 254 µm |
| Media Length (min to max) | 0.25 to 32 inches (6.35 to 812.8 mm) |
| Media Sensor | Fully adjustable rear sensor and high resolution front sensor |
| Main Interface | Triple interface USB, parallel and serial built-in, exchangeable interface card slot for optional card |
| Optional interfaces | Wireless LAN 802.11b and 802.11g standards, 100 metres, 64/128 bit WEP, WPA, up to 54Mbps, Ethernet (10/100 BaseT) |
| Ribbon size | 3.4 inches (86.5 mm) maximum outside diameter. 450 metres length. |
| Ribbon winding & type | Ink side in or out, automatically sensing. Wax, Wax/Resin or Resin Type |
| Ribbon system | ARCP™ automatic ribbon tension adjustment |
| Mechanism | Hi-Lift™ metal mechanism with wide opening head |
| Control panel | 4 buttons, 4-line back-lit graphic LCD |
| Emulations (Languages) | Cross-Emulation™ - autoswitch between Zebra® and Datamax® emulations |
| Drivers and software | Free-of-charge on CD with printer, including support for various platforms |

Citizen Systems Europe GmbH, Elizabeth House, 56-60 London Road, Staines-Upon-Thames, TW18 4HF, United Kingdom

Flash (Non-Volatile

4 MB total, 1 MB available for user

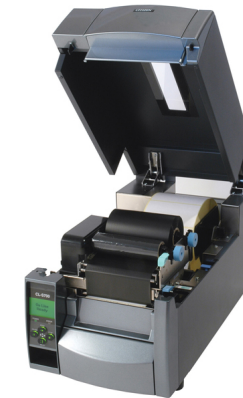
CL-S703

Other

Features & Benefits

- Paper exit: Front exit - prevents damage from moisture or foreign objects
- Paper load: Front access for all operations including media and ribbon changing
- Printing Speed: Ultra fast print out - up to 200mm per second (8 inches per second)
- Media support: Very large media capacity - holds rolls up to 8 inches (200 mm)
- Ribbon options: Wide range of ribbon options - Uses up to 450 metres inside and outside wound ribbons
- Display: Backlight LCD control panel for easy configuration

Hi-Lift™ for vertical opening, no print and safe closing. ARCP™ automatic ribbon tension adjustment assures clear prints. Hi-Lift™ - integrated power lean work station



Ingenuously designed for easy operation and reliability

CITIZEN SYSTEMS EUROPE GMBH

CITIZEN

CL-S703

Other

| | |
|--------------|----------------|
| Model | CL-S703 |
|--------------|----------------|

Warranty 2 years on printer. 6 months or 50 Kms printhead

All product names are trademarks of the respective manufacturers. Zebra®, ZPL and EPL are trademarks of ZIH Corp. Datamax® is a trademark of Datamax-O'Neil Corporation. Designs, specifications and availability are subject to change without notice. Errors and omissions excluded. © Citizen Systems Europe GmbH, V.1.0